

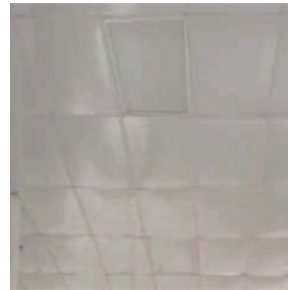
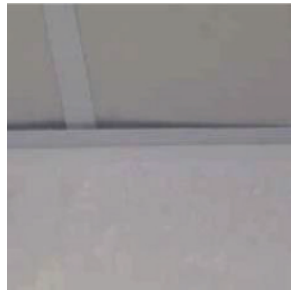
## Composites

### CEILING PANEL INSTALLATION WARNING

When FRP panels are used in conjunction with metal overlay grid systems, the space between the panel and the grid system may be unacceptable. This issue is highlighted with the use of smooth FRP panels as illustrated in the photos below.



Using heavy duty grids with lip and flange (pictured above), may result in a space when FRP panels are installed in the grid. (see photos below).



When FRP panels are placed in the grid, there will be a space due to the design of the grid. This space is accentuated, when using smooth panels.

**FOR BEST RESULTS PLEASE USE ONLY BUTT END CEILING GRID SYSTEMS OR THE SANIGRID<sup>®</sup> FIBERGLASS CEILING GRID SYSTEM WHEN INSTALLING FRP AS A CEILING PANEL.**

**Please contact Crane Composites at 1.800.435.0080 if have any further questions about ceiling grids and FRP ceiling panels.**

We believe all information given is accurate, without guarantee. Since conditions of use are beyond our control, all risks are assumed by the user. Nothing herein shall be construed as a recommendation for uses which infringe on valid patents or as extending a license under valid patents. [www.astm.org/Standards/E84.htm](http://www.astm.org/Standards/E84.htm).

A global leading provider of resilient wall and ceiling coverings. Kemlite<sup>®</sup> was established in 1954 and the company changed names to Crane Composites in 2007. Crane Composites is headquartered in Channahon, IL and all our products are manufactured in the United States. We work with hundreds of distributors, ensuring our products are easily accessible and readily available to our customers.

The following are trademarks of Crane Composites, Inc. or a related company: Glasbord, Kemlite, Kemply, Surfaseal, Sanigridd, Silhouette Trims and Varietex

