

**CRANE**

Composites

STYLED + DURABLE  
**surface systems**

Wall & Ceiling Panels **GLASBORD. | VARIETEX. | DESIGNS**



**frp** Fiberglass Reinforced Panels

## why **frp**? where **frp**?

### style + hygiene

When you need grace under pressure, fiberglass reinforced plastic (FRP) panels are the perfect choice for your walls. From moisture and germs to daily dirt and grime, our FRP panels are able to stand up to even the toughest environments - without sacrificing style and beauty.

As the first and largest global manufacturer of FRP wall paneling, Crane Composites offers the industry's most innovative and resilient FRP panels, backed by our expert technical and installation support staff. Our FRP panels are suitable for most commercial space and provide key benefits including:

### high end style

Take your surfaces beyond with our wide range of surface types, textures and colors, offering you endless options to create the beautiful look you've envisioned for your walls.

### dependable performance

Count on Crane FRP panels for extremely strong, durable panels that provide resistance to mold, mildew, bacteria growth, stains and chemicals. Plus, they're easy on your budget and designed to last for years to come.

### simple & cost-effective

Take it easy, from start to finish. Our FRP panels are simple to install over any existing wall surface and even simpler to maintain with a mild cleanser and sponge or soft brush. Plus, they're easy on your budget and designed to last for years to come.



there is more to **frp** than ever before

## restaurants

kitchens | dining rooms | restrooms | self-service beverage stations | bar areas | store rooms

## education

cafeterias | classrooms | restrooms | hallways | locker rooms | stadiums

## healthcare

waiting rooms | doctor offices | hospital rooms | cleanrooms | dialysis clinics

## hospitality

cafes | kitchens | lobbies | restrooms | food service areas | service hallways

## processing plants

cleanrooms | cultivation facilities | food processing | cold storage | pharmaceutical | labs | hospitals | warehouses

## retail

public areas | customer services | restrooms | bakeries | delis | store rooms



All Crane Composites coverings have earned GREENGUARD Certification for low chemical emissions, issued by UL Environment. This certification reflects our dedication to improving the quality of our products, while using low-emitting materials in their construction. The use of Crane Composites products may also contribute to earning LEED® certification.

GLASBORD and VARIETEX panels are the first FRP panels that are HACCP certified. Hazard Analysis Critical Control Point (HACCP) certifies that GLASBORD and VARIETEX panels are suitable for use in food and beverage facilities that operate in accordance with a HACCP based Food Safety Program. Orientation of embossed panels must be installed/ run vertically for any areas that require a sanitary finish under HACCP certification.



## GLASBORD® Wall Panels with SURFASEAL® Finish



GLASBORD EMBOSSED WALL PANEL  
SOFT BEIGE (70)

### add surfaseal

The Surfaseal film finish, found only on GLASBORD, provides a barrier that's highly resistant to impact and scratching. Because of our unique process, the Surfaseal finish will not trap soil or bacteria on the panel. The surface is up to 10 times easier to clean and up to six times more stain resistant than other sanitary wall systems.

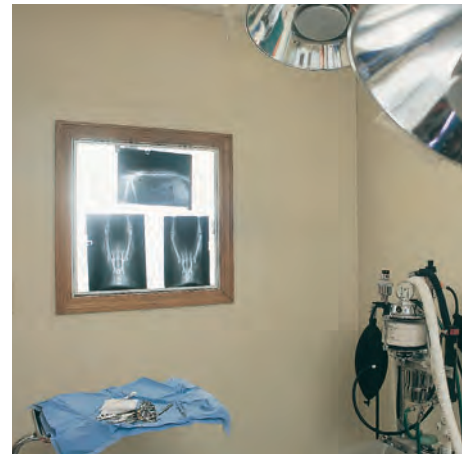
A global leading provider of resilient wall and ceiling coverings. Kemlite was established in 1954 and the company changed names to Crane Composites in 2007 to reflect the company's ongoing new product innovations that continue to expand beyond hygienic wall panels.



IVORY (84) | EMBOSSED



WHITE (85) | SMOOTH



SOFT BEIGE (70) | EMBOSSED

## product specs

### AVAILABLE SIZES:

4' x 8' | 4' x 10'

*(other sizes available upon request)*

### THICKNESSES:

0.09" (embossed) | 0.075" (smooth)

### FIRE RATINGS:\*\*

Class A or Class C per ASTM E-84

CAN/ULC-S102 | FM Approved Available

**\*\* see technical data sheets for fire rating information by color options**

### ACCESSORIES:

Standard PVC Moldings

Polyurethane Seam Sealant

Color Rite™ Color-Matched Silicone Caulk

Stainless Trims for corners and frames

Sani-Base™ Seamless Wall to Floor Transitions

### APPLICATIONS:

- Commercial Kitchens
- Cleanrooms
- Restrooms
- Convenience Stores
- Locker Rooms
- Food Processing Plants
- Indoor Agricultural Facilities

### FEATURES:

- Mold + Mildew Free
- Meets USDA/FSIS Requirements
- Restrooms
- Easy to Install
- Cleanable
- Durable

order samples at [frpsamples.com](https://frpsamples.com)



## **VARIETEX.** Innovative Textured + Colored Wall Panels



VARIETEX SANDSTONE WALL PANEL  
COTTON WHITE (1130)

### **warm designs**

Add depth and dimension to walls, with our unique textures including sandstone, linen, and beaded finishes. Beyond the beauty, VARIETEX offers all the same benefits of traditional FRP wall coverings

Take your surfaces beyond with a tile like finish on the sandstone and gel-coat panels. The grout lines are sealed for easy maintenance, avoiding the grimy build up encountered with regular tile.



MAJUNA RED (1296) + MORNING MIST GRAY (636)



SUGARLOAF SAND (1294)



PEPPERDUST (8044)

## product specs

### AVAILABLE SIZES:

4' x 8' | 4' x 10'

### THICKNESSES:

0.09" (sandstone + linen) | 0.075" (beaded)

### FIRE RATINGS:\*\*

Class A per ASTM E-84 (sandstone + linen non-satin only)

Class C per ASTM E-84 | CAN/ULC-S102

*\*\* see technical data sheets for fire rating information by color options*

### ACCESSORIES:

Color Rite™ Color-Matched Silicone Caulk  
Silhouette Trims Moldings | Aluminum Moldings  
Beaded Panel Moldings

### APPLICATIONS:

- School Hallways
- Cafeterias
- Restrooms
- Dining Rooms
- Reception Areas
- Health Clubs
- Hospitals

### FEATURES:

- Mold + Mildew Free
- Meets USDA/FSIS Requirements
- Easy to Install
- Cleanable
- Durable

for information on panel size call: **1.800.435.0080**



## DESIGNS Collections + Custom Imaged Wall Panels



DESIGNS WALL PANELS

CLASSIC COLLECTION | CAMEL CANVAS (010C)

### custom designs

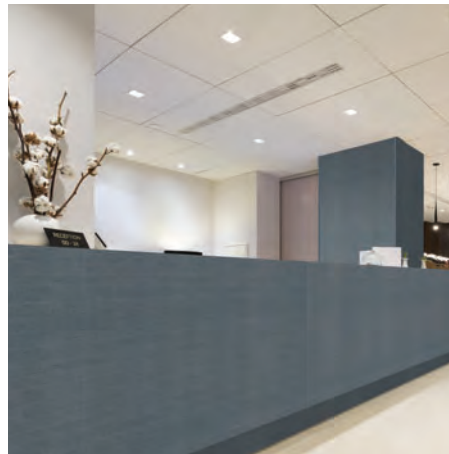
Imagine your artwork on a wall. Crane Composites brings your concept to reality with vibrant breathtaking details. Ask for alterations to one of our existing patterns or create your own unique design. Give life to your custom look in any arrangement you choose including logos, artwork, or corporate identity with vibrant high-resolution imagery.



DESIGNS resilient wall coverings, bring both style and durability into any commercial space. No need to sacrifice aesthetics for hygiene.



PATHWAYS COLLECTION | BEAM (06PW)



CLASSIC COLLECTION | COASTAL CANVAS (007C)



CLASSIC COLLECTION | CAMEL CANVAS (010C)

## product specs

### AVAILABLE SIZES:

4' x 8' | 4' x 10'

### THICKNESSES:

0.075"

### FIRE RATINGS:

Class A or Class C per ASTM E-84  
CAN/ULC-S102

### ACCESSORIES:

Silhouette Trims Moldings | Aluminum Moldings  
Color Rite™ Color-Matched Silicone Caulk

### APPLICATIONS:

- School Hallways
- Cafeterias
- Restrooms
- Dining Rooms
- Reception Areas
- Health Clubs
- Hospitals

### FEATURES:

- Mold + Mildew Free
- Meets USDA/FSIS Requirements
- Easy to Install
- Cleanable
- Durable

ask about custom designs at: **1.815.467.8600**

## **KEMPLY. + SANIGRID.** Wall Panels with SURFASEAL® Finish



KEMPLY WALL PANELS WITH SANIGRID CEILING GRID  
FLUTED POLYPROPYLENE | EMBOSSED WHITE (85)

### **add strength**

KEMPLY is fabricated by laminating GLASBORD panel to a rigid substrate. The resulting panel has structural strength and rigidity, allowing installation directly to a stud wall or ceiling. SANIGRID is the ideal solution for high humidity and chemical environment installations. SANIGRID system features a fast installation, with the entire system easily snapping together.

## KEMPLY® Laminated Wall + Ceiling Panels

### AVAILABLE SIZES:

4' x 8' | 4' x 10' (wall panels)  
23.75" x 23.75" | 23.75" x 47.75" (ceiling panels)

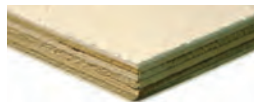
### AVAILABLE GLASBORD SKINS:

GLASBORD Embossed or Smooth Textures in Class A or Class C Fire Rating per ASTM E-84 (PWI, PIF, PSIF, FX, FS)

### AVAILABLE SUBSTRATES:



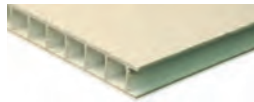
Gypsum: 1/2" | 5/8"



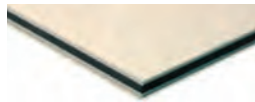
Plywood: 3/8" | 1/2" | 5/8" | 3/4"



Oriented Strand Board: 3/8" | 1/2" | 5/8"



Fluted Polypropylene: 0.32" | 0.40"



Double-Sided ACP Core: 0.12" | 0.24"

### APPLICATIONS:

- Car Washes
- Food Processing Plants
- Refrigerated Warehouses
- Commercial Kitchens
- Laboratories
- Locker Rooms
- Dormitories
- Kennels

### FEATURES:

- Mold + Mildew Free
- Meets USDA/FSIS Requirements
- Easy to Install
- Cleanable
- Durable

## SANIGRID® Ceiling Grid System

### AVAILABLE SIZES:

2' x 2' | 2' x 4'

### FIRE RATING:

Class A Fire Rating per ASTM E-84

### AVAILABLE CEILING PANELS:

GLASBORD Embossed or Smooth Textures in Class A or Class C Fire Rating per ASTM E-84 (CGI, PSIF, FX) or KEMPLY ACP Core



### APPLICATIONS:

- Car Washes
- Food Processing Plants
- Chemical Processing Plants
- Refrigerated Warehouses
- Commercial Kitchens

### FEATURES:

- Mold + Mildew Free
- Ideal for High Humidity
- Resistant to Chemical Environments
- Will Not Rust, Pit, Dent, or Peel



## GLASBORD color + finish options

### PEBBLED EMBOSSED TEXTURE



White | 85



Colonial White | 83



Silver | 66



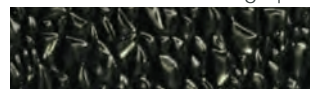
Ivory | 84



Pearl Gray | 48



Soft Beige | 70

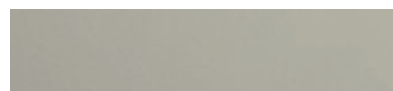


Black | 1201/97

### SMOOTH TEXTURE



White | 85



Gray | 636\*



Black | 1201\*

★ AVAILABLE IN CLASS C PER ASTM E-84 AND CAN/ULC-S102 ONLY

MINIMUM ORDER QUANTITIES AND OTHER TERMS MAY APPLY.  
PLEASE CONTACT [SALES@CRANECOMPOSITES.COM](mailto:SALES@CRANECOMPOSITES.COM) FOR ADDITIONAL INFORMATION

DUE TO LIMITATIONS OF THE PRINTING PROCESS, PATTERNS AND COLORS MAY VARY. THEY ARE A REPRESENTATION OF THE PRODUCT. PLEASE OBTAIN A SAMPLE BEFORE MAKING A FINAL SELECTION AT [FRPSAMPLES.COM](http://FRPSAMPLES.COM)



# VARIETEX color + finish options

## SANDSTONE TEXTURE



## LINEN TEXTURE

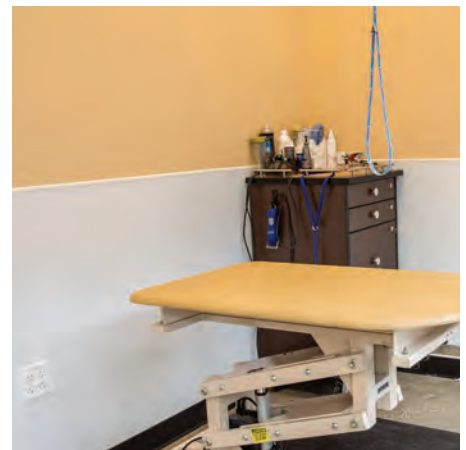


## BEADED TEXTURE



▲ AVAILABLE IN CLASS C PER ASTM E-84 ONLY

★ AVAILABLE IN CLASS C PER ASTM E-84 AND CAN/ULC-S102 ONLY

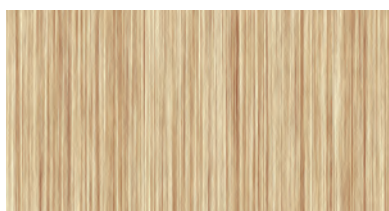




## The Classic Collection

### DESIGNS

#### WOODGRAIN PATTERNS



Baton Rouge Bamboo | 001BRB



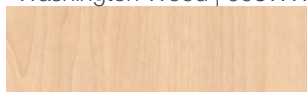
Carolina Cherry | 002CC



Sierra Ash | 018SA



Washington Wood | 008WW



Maryland Maple | 009MM

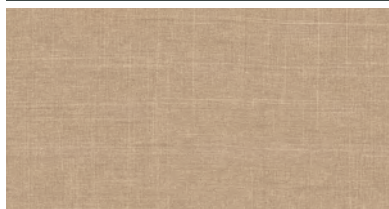


Tennessee Timber | 003TT

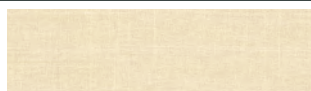


Chestnut Oak | 622SRP

#### CANVAS PATTERNS



Camel Canvas | 010C



Colonial Canvas | 012C



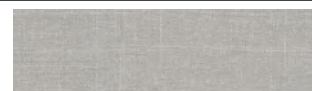
Coastal Canvas | 007C



Corn Silk Canvas | 008C



Cactus Canvas | 009C

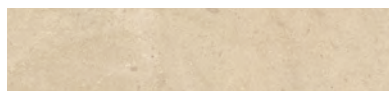


Chrome Canvas | 011C

#### STONE + NATURAL PATTERNS



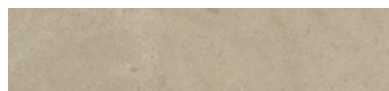
True Terrazzo | 005TZ



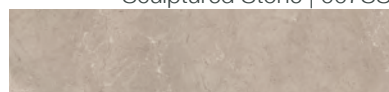
Scattered Stone | 004SS



Maui Marble | 006MM

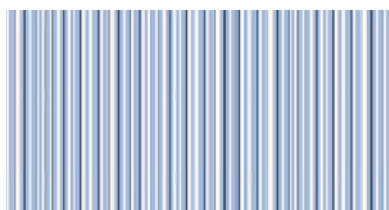


Sculptured Stone | 007SS



Greystone | 024GS

#### INNOVATIVE PATTERNS



Piri Blue Stripe | 023PBS



Caramel Crosshatch | 013CH



Brushed Metal | 025BM





# The Forest Collection

## DESIGNS



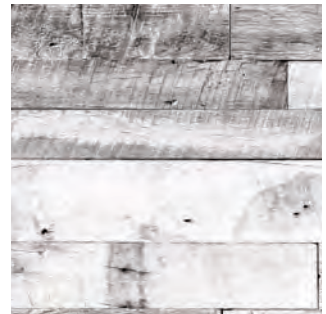
Sabine | 30W  
representative of full panel design



Pike | 31W



Sequoia | 32W



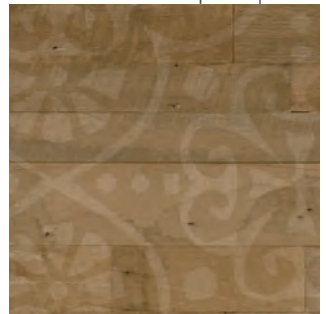
Arapaho | 33W



Payette | 34W



Ocala | 35W



Sawtooth | 36W

MINIMUM ORDER QUANTITIES AND OTHER TERMS MAY APPLY.  
PLEASE CONTACT [SALES@CRANECOMPOSITES.COM](mailto:SALES@CRANECOMPOSITES.COM) FOR ADDITIONAL INFORMATION

IMAGES ARE BASED ON A 2'X2' EXAMPLE - FULL PANELS MAY HAVE SLIGHT DIFFERENCES IN PATTERN AND HUE  
IN ORDER TO PORTRAY A REALISTIC MATERIAL VIEW.

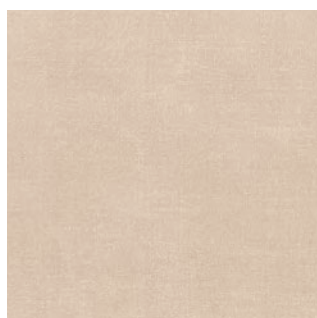
DUE TO LIMITATIONS OF THE PRINTING PROCESS, PATTERNS AND COLORS MAY VARY. THEY ARE A REPRESENTATION  
OF THE PRODUCT. PLEASE OBTAIN A SAMPLE BEFORE MAKING A FINAL SELECTION AT [FRPSAMPLES.COM](http://FRPSAMPLES.COM)





## The Heartland Collection

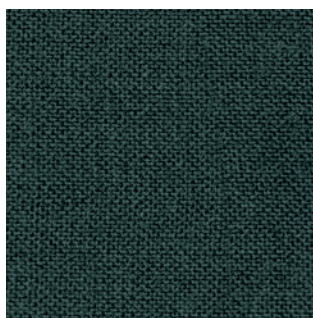
## DESIGNS



Colby | 57HC



Waukon | 55HC



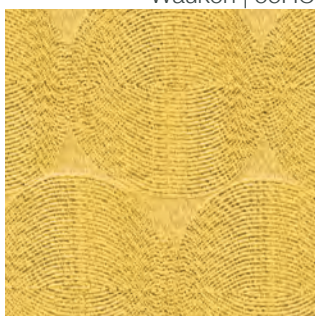
Guss | 53HC



Shelby | 50HC



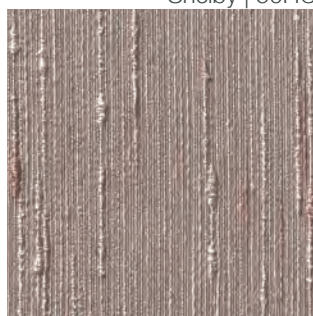
Dwight | 51HC



Essex | 54HC



Davey | 52HC



Conrad | 56HC

MINIMUM ORDER QUANTITIES AND OTHER TERMS MAY APPLY.  
PLEASE CONTACT [SALES@CRANECOMPOSITES.COM](mailto:SALES@CRANECOMPOSITES.COM) FOR ADDITIONAL INFORMATION

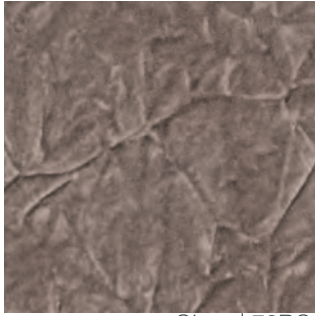
IMAGES ARE BASED ON A 2'X2' EXAMPLE - FULL PANELS MAY HAVE SLIGHT DIFFERENCES IN PATTERN AND HUE  
IN ORDER TO PORTRAY A REALISTIC MATERIAL VIEW.

DUE TO LIMITATIONS OF THE PRINTING PROCESS, PATTERNS AND COLORS MAY VARY. THEY ARE A REPRESENTATION  
OF THE PRODUCT. PLEASE OBTAIN A SAMPLE BEFORE MAKING A FINAL SELECTION AT [FRPSAMPLES.COM](http://FRPSAMPLES.COM)

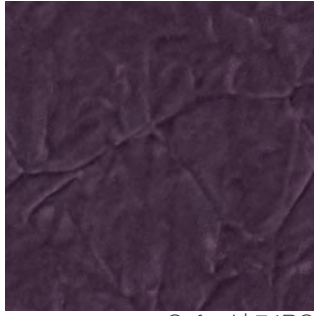


## The Runway Collection

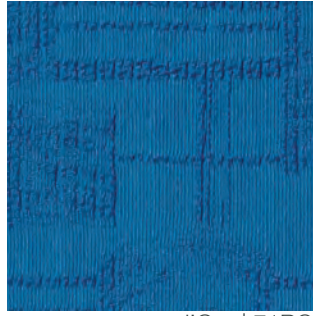
### DESIGNS



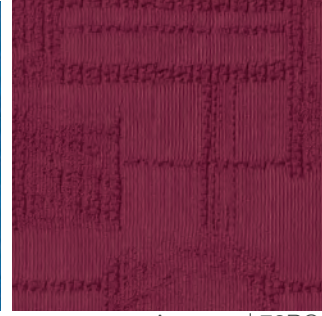
Ginza | 70RC



Oxford | 74RC



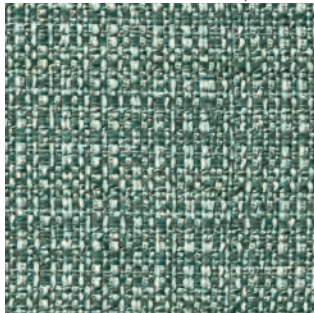
d'Oro | 71RC



Avenues | 72RC



Gracia | 76RC



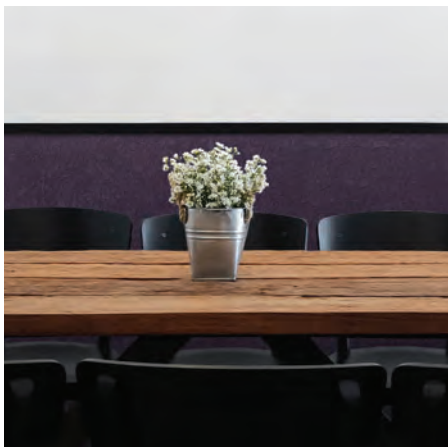
Garment | 73RC



Palermo | 75RC



Champs | 77RC



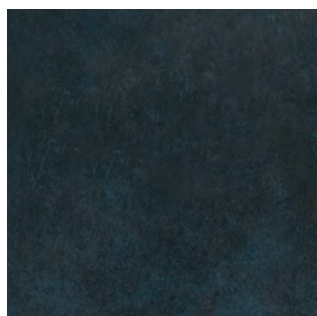


## The City Works Collection

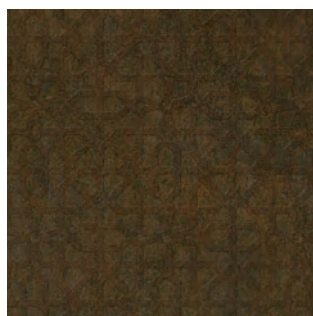
## DESIGNS



Burlington | 90CW  
representative of full panel design



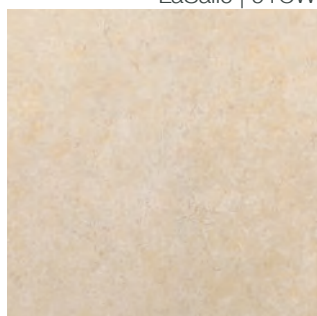
LaSalle | 91CW



Staten | 92CW



Skyway | 93CW



Union | 94CW



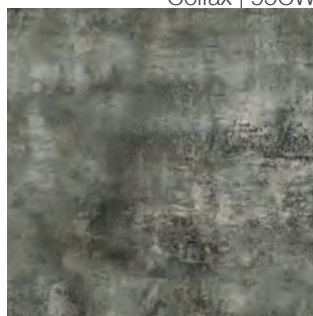
Colfax | 95CW



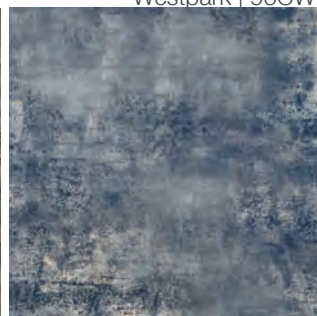
Westpark | 96CW



Sumner | 97CW



Franklin | 98CW



Mover | 99CW





# The Pathways Collection

## DESIGNS



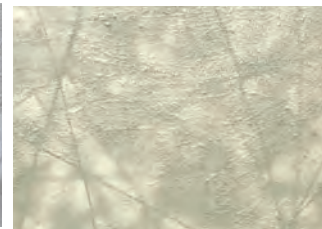
Signals | 01PW  
representative of full panel design



Reflect | 02PW



Line | 03PW



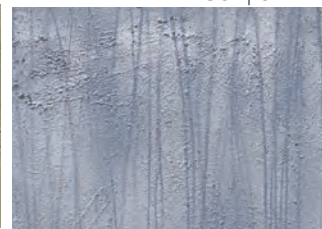
Cell | 04PW



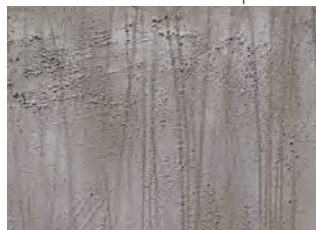
Stream | 05PW



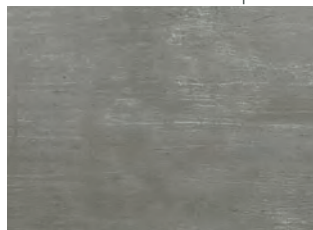
Beam | 06PW



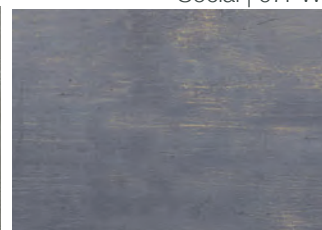
Social | 07PW



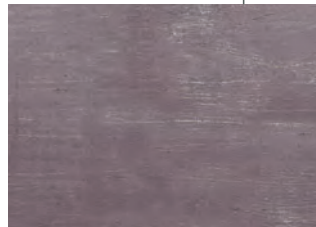
Link | 08PW



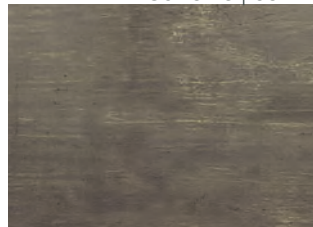
Currents | 09PW



Wave | 10PW



Connect | 11PW



Footprint | 12PW

MINIMUM ORDER QUANTITIES AND OTHER TERMS MAY APPLY.  
PLEASE CONTACT [SALES@CRANECOMPOSITES.COM](mailto:SALES@CRANECOMPOSITES.COM) FOR ADDITIONAL INFORMATION

IMAGES ARE BASED ON A 2'X2' EXAMPLE - FULL PANELS MAY HAVE SLIGHT DIFFERENCES IN PATTERN AND HUE  
IN ORDER TO PORTRAY A REALISTIC MATERIAL VIEW.

DUE TO LIMITATIONS OF THE PRINTING PROCESS, PATTERNS AND COLORS MAY VARY. THEY ARE A REPRESENTATION  
OF THE PRODUCT. PLEASE OBTAIN A SAMPLE BEFORE MAKING A FINAL SELECTION AT [FRPSAMPLES.COM](http://FRPSAMPLES.COM)



# VARIETEX + DESIGNS CUSTOM PROGRAM



Imagine your artwork on a wall. Crane Composites brings your concept to reality with vibrant breathtaking details.

Ask for alterations to one of our existing colors or patterns or create your own unique color or design. Give life to your custom look in any arrangement you choose including logos, artwork, or corporate identity colors. The choices are endless with exceptional image quality and color accuracy.

We made the customization process simple, ensuring you have the product you need, when you need it. Perfect for jobs large and small, Crane can deliver your custom wall coverings needs.

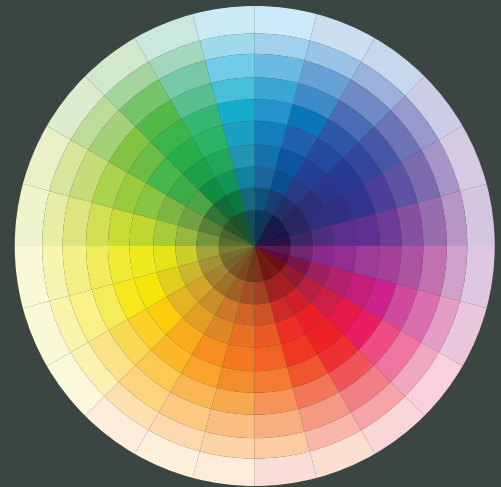
Bring your concept **to reality**

## VARIETEX CUSTOM COLOR

What's your favorite color? From the any favorite object to a specific Pantone color chip, Crane Composites utilizes the most modern methods and computerized equipment available for matching and controlling product colors.

Simply provide a small color sample of 2"x2" or provide a Pantone color swatch, the rest is up to us! We will provide you with a FRP sample of your custom color within 2DE ( $\pm 2$ ) of your targeted color. Select your fire rating and sandstone or linen finish and then you are ready for you to place your order.

MINIMUM ORDER QUANTITIES AND OTHER TERMS MAY APPLY.  
PLEASE CONTACT [SALES@CRANECOMPOSITES.COM](mailto:SALES@CRANECOMPOSITES.COM) FOR ADDITIONAL INFORMATION





# DESIGNS CUSTOM PATTERNS

Bring your creative ideas to life with vibrant high-resolution imagery (up to 600 DPI). The choices are endless with exceptional image quality and color accuracy of our scratch resistant coated digital imaging.

Get the product you need, when you need it with our simple customization process. Submit any visual sample available and our team will help your vision become reality. Perfect for jobs large and small, Crane can deliver within tight timelines and lower installed costs than custom-printed HPL or vinyl wall coverings.

DESIGNS offers the ultimate custom wall protection with low minimums and short lead times. Complete your wall assembly with Crane's contemporary aluminum moldings or custom imaged trims to match.



## photography



Utilize high resolution photography for stunning interior walls. At the University of Michigan Crisler Center, various athletic event photographs were printed in the iconic Michigan blue color.

## branding



Easily add your logo to an existing pattern, solid color, or image. The Revolving Kitchen in Dallas, TX added their logo to an open kitchen setting.

## patterns



Crane's imaging capabilities are endless with unique patterns and colors with accurate shadowing. A Midwest deli restaurant created a tile-look pattern on a full FRP panel.

## illustrations



Create your own unique design on a blank canvas for endless options. Joliet West High School in Illinois features a unique word cloud pattern that showcases team spirit in the locker room.

## variations



Alter an existing pattern by adding corporate identity to a panel or modifying colors. Barry's Bagels in Troy, MI utilized our DESIGNS Payette from the Forest collection while adding their logo and slogan to accentuate the desired brand image.

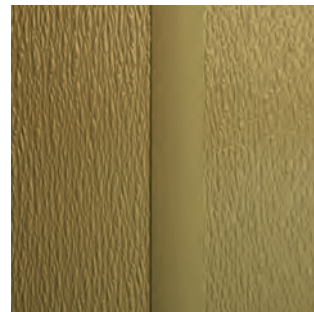
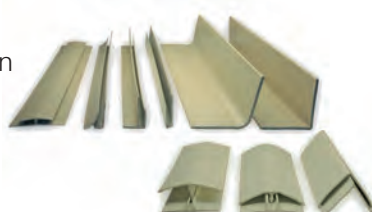
## SEAM TREATMENT ACCESSORIES

Crane Composites offers an array of seam treatment options to complete your wall panel installations.

### PVC MOLDINGS

#### Standard for GLASBORD + Wide for KEMPLY

Standard moldings are contractor grade moldings that are perfect for use with FRP panels. Crane Composites division bars feature patterned expansion control guides to assist with proper FRP installation. Available in 10' lengths in GLASBORD and KEMPLY standard colors.



### COLOR SIL COLOR-MATCHED CAULK

#### for GLASBORD, VARIETEX, + DESIGNS, Panels | by Color Rite inc.

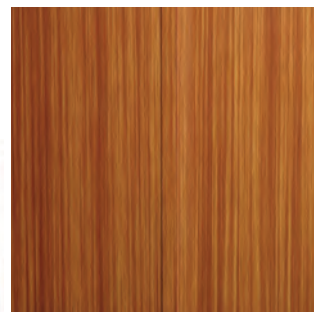
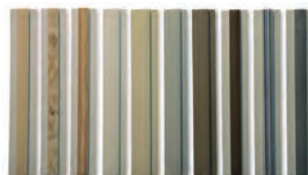
Use Color Rite's Color Sil caulk for professional looking panel installations without the use of moldings. Crane has teamed up with Color Rite to provide materials that compliment Crane wall panels in over 40 colors. Use with Color Rite's Pre-Tooling Mist to install with ease.



### SILHOUETTE TRIMS.

#### For DESIGNS + VARIETEX Panels

Silhouette Trims offer a narrow profile to minimize the seam. Crane Composites Silhouette Trims feature patterned expansion control guides to assist with proper FRP installation. Available in 10' lengths in DESIGNS and VARIETEX Classic collection.



### BEADED PANEL MOLDINGS

#### For VARIETEX Beaded Panels

Specially designed beaded division bar to compliment our beaded panels. Available in 10' lengths in cotton white (1130) color.



### ALUMINUM TRIMS

#### For DESIGNS + VARIETEX Panels

Designed for a contrasting and upscale look. Available in 10' lengths in silver color.





## POLYURETHANE SEAM SEALANT

### For Seamless GLASBORD Panels

Seam Sealant is an equal-mix, two-component bright white urethane sealant system used to bond and seal a variety of plastics.



## STAINLESS TRIMS

### Steel Trims for Corners + Window Frames

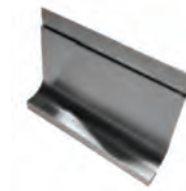
Stainless steel trim pieces are the answer to having a sanitary, durable and clean transition while providing increased impact resistance and longevity to develop a more aesthetically pleasing finish.



## SANI-BASE™

### Seamless Wall to Floor Transition

Use Sani-Base stainless accessories for innovative moisture mitigation solutions for seamless wall to floor transitions. Our Sani-Base accessories are available in five different profiles to fit your application needs.



## INSTALLATION TOOLS

Our wall panels are easy to install with our tools

Installation accessories include our CRANE Fast Grab or CRANE Advanced Polymer Adhesive, rollers and trowels along with detailed installation guides and videos.

Visit [cranecomposites.com/resources.html](http://cranecomposites.com/resources.html) for detailed installation information.



## who we are

Crane Composites Inc., a subsidiary of Crane Holdings, Co. (NYSE:CR), is the world's leading provider of fiber-reinforced composite materials.



## The superior option

Since 1954, we have continued to pioneer numerous patented technologies for industrial and commercial product applications. Crane Composites fiber-reinforced panels (FRP) can be found in virtually every type of market, from highly industrialized environments to stylish retail and hospitality settings.

No matter what the application, our products and team reflect our mission statement: we are a performance

driven organization committed to global leadership and products of high-quality composite materials.

Customers benefit not only from the outstanding performance characteristics of our products, but also from our extensive support programs. Our expert product teams are focused on the needs of customers to provide unparalleled service and expertise.



[cranecomposites.com](http://cranecomposites.com) | 1.800.435.0080 | [sales@cranecomposites.com](mailto:sales@cranecomposites.com)

THE FOLLOWING ARE TRADEMARKS OF CRANE COMPOSITES, INC. OR A RELATED COMPANY: GLASBORD, KEMPLITE, KEMPLY, SURFASEAL, SANIGRID, SILHOUETTE TRIMS AND VARIETEX  
Form 6680 | Rev. 25 | 03.24 (10280)

MADE IN THE  
**USA**