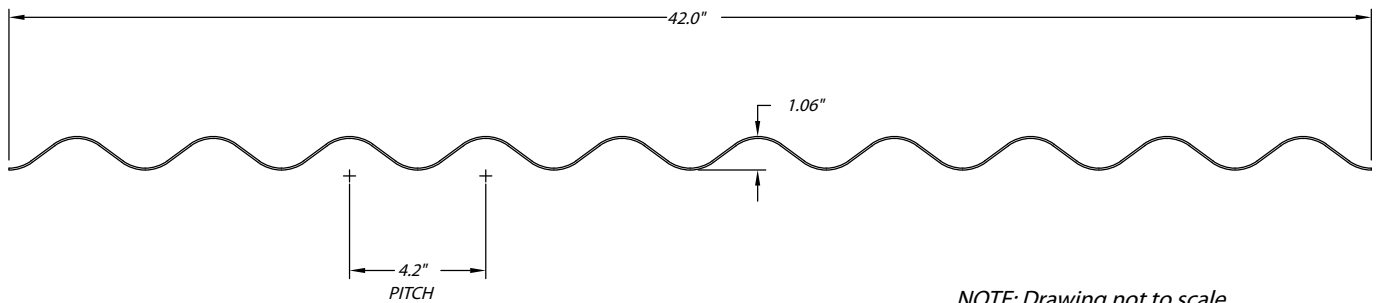


CURRENTLY AVAILABLE

4.2 x 1 1/16" (Profile #008)	5.33 x 1 3/4" (Profile #041)	7.2 x 1 1/16" (Profile #455)	Corner Roll (Profile #152)	Formulations
008 CTN 8oz.	041 CTN 8oz.	455 CTN 8oz.	152 CTN 8oz.	CTN - Non Fire Rated CTA - Fire Rated Class A IFW - Fire Rated Class A - High Strength
008 CTN 12oz.	041 CTN 12oz.	455 CTN 12oz.	152 CTA 12oz.	
008 CTN 16oz.	041 CTN 16oz.	455 CTA 16oz.		
008 CTA 12oz.	041 CTA 12oz.	455 CTA 12oz.		
008 IFW 16oz.	041 IFW 16oz.	455 IFW 16oz.		
All Products are Available in Light Gray (675) Physical Properties are Available: CTN (form #3201) CTA (form #3202) IFW (form #3203)				

PROFILE DRAWING 008



008 CTN | 8oz.

For CTN Physical Properties Please Refer to Form #3701

TABLES BELOW IN FEET AND INCHES ONLY

ROOFING: POSITIVE LOADS Panel Description: 4.2 x 1-1/16 Cooling Tower - NonFierated 8 oz./sq. ft.	LIMITING CRITERIA: 2.5 to 1 Safety Factor Panel Strength = 25000 psi												45 to 1 Deflection Limit Ratio (L/D) Flexural Modulus = 600000 psi		
	20 psf			30 psf			40 psf			50 psf			60 psf		
	1 SPAN	2 SPAN	3+ SPAN	1 SPAN	2 SPAN	3+ SPAN	1 SPAN	2 SPAN	3+ SPAN	1 SPAN	2 SPAN	3+ SPAN	1 SPAN	2 SPAN	3+ SPAN
Stress Limit	7'-1"	7'-1"	7'-11"	5'-10"	5'-10"	6'-6"	5'-0"	5'-0"	5'-7"	4'-6"	4'-6"	5'-0"	4'-1"	4'-1"	4'-7"
Deflection Limit	3'-1"	4'-2"	3'-10"	2'-8"	3'-8"	3'-4"	2'-5"	3'-4"	3'-0"	2'-3"	3'-1"	2'-10"	2'-2"	2'-11"	2'-8"

ROOFING/SIDING: WIND LOADS Panel Description: 4.2 x 1-1/16 Cooling Tower - NonFierated 8 oz./sq. ft.	LIMITING CRITERIA: 1.88 to 1 Safety Factor Panel Strength = 25000 psi						20 to 1 Deflection Limit Ratio (L/D) Flexural Modulus = 600000 psi								
	20 psf			30 psf			40 psf			50 psf			60 psf		
	1 SPAN	2 SPAN	3+ SPAN	1 SPAN	2 SPAN	3+ SPAN	1 SPAN	2 SPAN	3+ SPAN	1 SPAN	2 SPAN	3+ SPAN	1 SPAN	2 SPAN	3+ SPAN
Stress Limit	8'-2"	8'-2"	9'-2"	6'-8"	6'-8"	7'-6"	5'-9"	5'-9"	6'-6"	5'-2"	5'-2"	5'-9"	4'-9"	4'-9"	5'-3"
Deflection Limit	4'-1"	5'-5"	5'-0"	3'-7"	4'-9"	4'-5"	3'-3"	4'-4"	4'-0"	3'-0"	4'-0"	3'-8"	2'-10"	3'-9"	3'-6"

This information is provided as preliminary data for designers. It should be checked and verified and its use determined by a duty licensed engineer or architect. NOTE: Spans will vary with resin formulation, glass content, and thickness. For data on other profiles, formulations, or conditions contact the technical department.

DISCLAIMER: These load span tables do not reflect any span reduction that may be associated with various fastening options.

008 CTN | 12oz.

For CTN Physical Properties Please Refer to Form #3701

TABLES BELOW IN FEET AND INCHES ONLY

ROOFING: POSITIVE LOADS Panel Description: 4.2 x 1-1/16 Cooling Tower - NonFired 12 oz./sq. ft.	LIMITING CRITERIA: 2.5 to 1 Safety Factor						45 to 1 Deflection Limit Ratio (L/D)								
	Panel Strength = 25000 psi						Flexural Modulus = 600000 psi								
	20 psf			30 psf			40 psf			50 psf			60 psf		
	1 SPAN	2 SPAN	3+ SPAN	1 SPAN	2 SPAN	3+ SPAN	1 SPAN	2 SPAN	3+ SPAN	1 SPAN	2 SPAN	3+ SPAN	1 SPAN	2 SPAN	3+ SPAN
Stress Limit	8'-7"	8'-7"	9'-8"	7'-0"	7'-0"	7'-10"	6'-1"	6'-1"	6'-10"	5'-5"	5'-5"	6'-1"	5'-0"	5'-0"	5'-7"
Deflection Limit	3'-7"	4'-9"	4'-5"	3'-1"	4'-2"	3'-10"	2'-10"	3'-9"	3'-6"	2'-7"	3'-6"	3'-3"	2'-5"	3'-4"	3'-0"

ROOFING/SIDING: WIND LOADS Panel Description: 4.2 x 1-1/16 Cooling Tower - NonFired 12 oz./sq. ft.	LIMITING CRITERIA: 1.88 to 1 Safety Factor						20 to 1 Deflection Limit Ratio (L/D)								
	Panel Strength = 25000 psi						Flexural Modulus = 600000 psi								
	20 psf			30 psf			40 psf			50 psf			60 psf		
	1 SPAN	2 SPAN	3+ SPAN	1 SPAN	2 SPAN	3+ SPAN	1 SPAN	2 SPAN	3+ SPAN	1 SPAN	2 SPAN	3+ SPAN	1 SPAN	2 SPAN	3+ SPAN
Stress Limit	9'-11"	9'-11"	11'-1"	8'-1"	8'-1"	9'-1"	7'-0"	7'-0"	7'-10"	6'-3"	6'-3"	7'-0"	5'-9"	5'-9"	6'-5"
Deflection Limit	4'-8"	6'-3"	5'-9"	4'-1"	5'-5"	5'-0"	3'-8"	4'-11"	4'-7"	3'-5"	4'-7"	4'-3"	3'-3"	4'-4"	4'-0"

008 CTN | 16oz.

For CTN Physical Properties Please Refer to Form #3701

TABLES BELOW IN FEET AND INCHES ONLY

ROOFING: POSITIVE LOADS Panel Description: 4.2 x 1-1/16 Cooling Tower - NonFired 16 oz./sq. ft.	LIMITING CRITERIA: 2.5 to 1 Safety Factor						45 to 1 Deflection Limit Ratio (L/D)								
	Panel Strength = 25000 psi						Flexural Modulus = 600000 psi								
	20 psf			30 psf			40 psf			50 psf			60 psf		
	1 SPAN	2 SPAN	3+ SPAN	1 SPAN	2 SPAN	3+ SPAN	1 SPAN	2 SPAN	3+ SPAN	1 SPAN	2 SPAN	3+ SPAN	1 SPAN	2 SPAN	3+ SPAN
Stress Limit	9'-10"	9'-10"	11'-0"	8'-1"	8'-1"	9'-0"	7'-0"	7'-0"	7'-10"	6'-3"	6'-3"	7'-0"	5'-8"	5'-8"	6'-4"
Deflection Limit	3'-11"	5'-3"	4'-10"	3'-5"	4'-7"	4'-3"	3'-1"	4'-2"	3'-10"	2'-10"	3'-10"	3'-7"	2'-8"	3'-8"	3'-4"

ROOFING/SIDING: WIND LOADS Panel Description: 4.2 x 1-1/16 Cooling Tower - NonFired 16 oz./sq. ft.	LIMITING CRITERIA: 1.88 to 1 Safety Factor						20 to 1 Deflection Limit Ratio (L/D)								
	Panel Strength = 25000 psi						Flexural Modulus = 600000 psi								
	20 psf			30 psf			40 psf			50 psf			60 psf		
	1 SPAN	2 SPAN	3+ SPAN	1 SPAN	2 SPAN	3+ SPAN	1 SPAN	2 SPAN	3+ SPAN	1 SPAN	2 SPAN	3+ SPAN	1 SPAN	2 SPAN	3+ SPAN
Stress Limit	11'-4"	11'-4"	12'-9"	9'-3"	9'-3"	10'-5"	8'-1"	8'-1"	9'-0"	7'-2"	7'-2"	8'-1"	6'-7"	6'-7"	7'-4"
Deflection Limit	5'-1"	6'-10"	6'-4"	4'-6"	6'-0"	5'-6"	4'-1"	5'-5"	5'-0"	3'-9"	5'-1"	4'-8"	3'-7"	4'-9"	4'-5"

008 CTA | 12oz.

For CTA Physical Properties Please Refer to Form #3702

TABLES BELOW IN FEET AND INCHES ONLY

ROOFING: POSITIVE LOADS Panel Description: 4.2 x 1-1/16 Cooling Tower - Fierated 12 oz./sq. ft.	LIMITING CRITERIA: 2.5 to 1 Safety Factor						45 to 1 Deflection Limit Ratio (L/D)								
	Panel Strength = 20000 psi						Flexural Modulus = 450000 psi								
	20 psf			30 psf			40 psf			50 psf			60 psf		
	1 SPAN	2 SPAN	3+ SPAN	1 SPAN	2 SPAN	3+ SPAN	1 SPAN	2 SPAN	3+ SPAN	1 SPAN	2 SPAN	3+ SPAN	1 SPAN	2 SPAN	3+ SPAN
Stress Limit	7'-9"	7'-9"	8'-8"	6'-4"	6'-4"	7'-1"	5'-6"	5'-6"	6'-2"	4'-11"	4'-11"	5'-6"	4'-6"	4'-6"	5'-0"
Deflection Limit	3'-3"	4'-4"	4'-0"	2'-10"	3'-9"	3'-6"	2'-7"	3'-5"	3'-2"	2'-5"	3'-2"	2'-11"	2'-3"	3'-0"	2'-9"

ROOFING/SIDING: WIND LOADS Panel Description: 4.2 x 1-1/16 Cooling Tower - Fierated 12 oz./sq. ft.	LIMITING CRITERIA: 1.88 to 1 Safety Factor						20 to 1 Deflection Limit Ratio (L/D)								
	Panel Strength = 20000 psi						Flexural Modulus = 450000 psi								
	20 psf			30 psf			40 psf			50 psf			60 psf		
	1 SPAN	2 SPAN	3+ SPAN	1 SPAN	2 SPAN	3+ SPAN	1 SPAN	2 SPAN	3+ SPAN	1 SPAN	2 SPAN	3+ SPAN	1 SPAN	2 SPAN	3+ SPAN
Stress Limit	8'-11"	8'-11"	10'-0"	7'-4"	7'-4"	8'-2"	6'-4"	6'-4"	7'-1"	5'-8"	5'-8"	6'-4"	5'-2"	5'-2"	5'-9"
Deflection Limit	4'-3"	5'-8"	5'-3"	3'-8"	5'-0"	4'-7"	3'-4"	4'-6"	4'-2"	3'-1"	4'-2"	3'-10"	2'-11"	3'-11"	3'-8"

This information is provided as preliminary data for designers. It should be checked and verified and its use determined by a duty licensed engineer or architect. NOTE: Spans will vary with resin formulation, glass content, and thickness. For data on other profiles, formulations, or conditions contact the technical department.

DISCLAIMER: These load span tables do not reflect any span reduction that may be associated with various fastening options.

008 IFW | 16oz.

For IFW Physical Properties Please Refer to Form #3703

TABLES BELOW IN FEET AND INCHES ONLY

ROOFING: POSITIVE LOADS Panel Description: 4.2 x 1-1/16 IsoTuf High-Strength 16 oz./sq. ft.	LIMITING CRITERIA: 2.5 to 1 Safety Factor Panel Strength = 30000 psi						45 to 1 Deflection Limit Ratio (L/D) Flexural Modulus = 1000000 psi								
	20 psf			30 psf			40 psf			50 psf			60 psf		
	1 SPAN	2 SPAN	3+ SPAN	1 SPAN	2 SPAN	3+ SPAN	1 SPAN	2 SPAN	3+ SPAN	1 SPAN	2 SPAN	3+ SPAN	1 SPAN	2 SPAN	3+ SPAN
Stress Limit	11'-6"	11'-6"	12'-10"	9'-5"	9'-5"	10'-6"	8'-2"	8'-2"	9'-1"	7'-3"	7'-3"	8'-2"	6'-8"	6'-8"	7'-5"
Deflection Limit	4'-10"	6'-6"	6'-0"	4'-3"	5'-8"	5'-3"	3'-10"	5'-2"	4'-9"	3'-7"	4'-9"	4'-5"	3'-4"	4'-6"	4'-2"

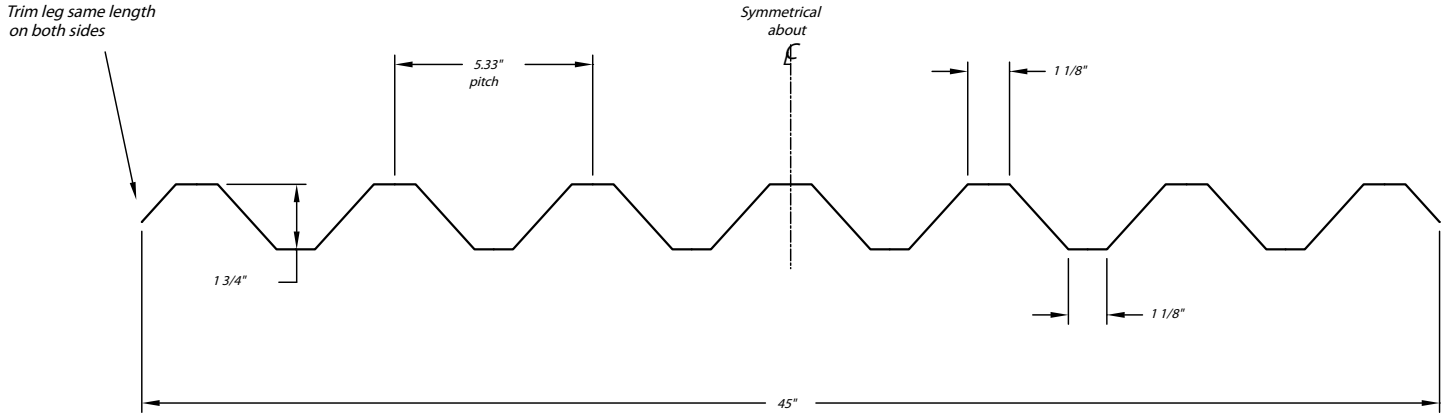
ROOFING/SIDING: WIND LOADS Panel Description: 4.2 x 1-1/16 IsoTuf High-Strength 16 oz./sq. ft.	LIMITING CRITERIA: 1.88 to 1 Safety Factor Panel Strength = 30000 psi						20 to 1 Deflection Limit Ratio (L/D) Flexural Modulus = 1000000 psi								
	20 psf			30 psf			40 psf			50 psf			60 psf		
	1 SPAN	2 SPAN	3+ SPAN	1 SPAN	2 SPAN	3+ SPAN	1 SPAN	2 SPAN	3+ SPAN	1 SPAN	2 SPAN	3+ SPAN	1 SPAN	2 SPAN	3+ SPAN
Stress Limit	13'-3"	13'-3"	14'-10"	10'-10"	10'-10"	12'-1"	9'-4"	9'-4"	10'-6"	8'-5"	8'-5"	9'-4"	7'-8"	7'-8"	8'-7"
Deflection Limit	6'-4"	8'-6"	7'-10"	5'-6"	7'-5"	6'-10"	5'-0"	6'-9"	6'-3"	4'-8"	6'-3"	5'-9"	4'-5"	5'-11"	5'-5"

This information is provided as preliminary data for designers. It should be checked and verified and its use determined by a duty licensed engineer or architect. NOTE: Spans will vary with resin formulation, glass content, and thickness. For data on other profiles, formulations, or conditions contact the technical department.

DISCLAIMER: These load span tables do not reflect any span reduction that may be associated with various fastening options.

PROFILE DRAWING 041

NOTE: Drawing not to scale



041 CTN | 8oz.

For CTN Physical Properties Please Refer to Form #3701

ROOFING: POSITIVE LOADS Panel Description: 5.33" x 1 3/4" V Beam Cooling Tower - NonFirerated 8 oz./sq. ft.	LIMITING CRITERIA: 2.5 to 1 Safety Factor						45 to 1 Deflection Limit Ratio (L/D)								
	Panel Strength = 25000 psi						Flexural Modulus = 600000 psi								
	20 psf		30 psf			40 psf		50 psf		60 psf					
	1 SPAN	2 SPAN	3+ SPAN	1 SPAN	2 SPAN	3+ SPAN	1 SPAN	2 SPAN	3+ SPAN	1 SPAN	2 SPAN	3+ SPAN	1 SPAN	2 SPAN	3+ SPAN
Stress Limit	9'-4"	9'-4"	10'-6"	7'-8"	7'-8"	8'-7"	6'-8"	6'-8"	7'-5"	5'-11"	5'-11"	6'-8"	5'-5"	5'-5"	6'-1"
Deflection Limit	4'-5"	5'-10"	5'-5"	3'-10"	5'-1"	4'-9"	3'-6"	4'-8"	4'-3"	3'-3"	4'-4"	4'-0"	3'-0"	4'-1"	3'-9"

ROOFING/SIDING: WIND LOADS Panel Description: 5.33" x 1 3/4" V Beam Cooling Tower - NonFirerated 8 oz./sq. ft.	LIMITING CRITERIA: 1.88 to 1 Safety Factor						20 to 1 Deflection Limit Ratio (L/D)								
	Panel Strength = 25000 psi						Flexural Modulus = 600000 psi								
	20 psf		30 psf			40 psf		50 psf		60 psf					
	1 SPAN	2 SPAN	3+ SPAN	1 SPAN	2 SPAN	3+ SPAN	1 SPAN	2 SPAN	3+ SPAN	1 SPAN	2 SPAN	3+ SPAN	1 SPAN	2 SPAN	3+ SPAN
Stress Limit	10'-10"	10'-10"	12'-1"	8'-10"	8'-10"	9'-10"	7'-8"	7'-8"	8'-7"	6'-10"	6'-10"	7'-8"	6'-3"	6'-3"	7'-0"
Deflection Limit	5'-9"	7'-8"	7'-1"	5'-0"	6'-9"	6'-2"	4'-7"	6'-1"	5'-7"	4'-3"	5'-8"	5'-3"	4'-0"	5'-4"	4'-11"

041 CTN | 12oz.

For CTN Physical Properties Please Refer to Form #3701

TABLES BELOW IN FEET AND INCHES ONLY

ROOFING: POSITIVE LOADS Panel Description: 5.33" x 1 3/4" V Beam Cooling Tower - NonFirerated 12 oz./sq. ft.	LIMITING CRITERIA: 2.5 to 1 Safety Factor						45 to 1 Deflection Limit Ratio (L/D)								
	Panel Strength = 25000 psi						Flexural Modulus = 600000 psi								
	20 psf		30 psf			40 psf		50 psf		60 psf					
	1 SPAN	2 SPAN	3+ SPAN	1 SPAN	2 SPAN	3+ SPAN	1 SPAN	2 SPAN	3+ SPAN	1 SPAN	2 SPAN	3+ SPAN	1 SPAN	2 SPAN	3+ SPAN
Stress Limit	11'-5"	11'-5"	12'-9"	9'-4"	9'-4"	10'-5"	8'-1"	8'-1"	9'-0"	7'-3"	7'-3"	8'-1"	6'-7"	6'-7"	7'-4"
Deflection Limit	5'-0"	6'-9"	6'-2"	4'-5"	5'-10"	5'-5"	4'-0"	5'-4"	4'-11"	3'-8"	4'-11"	4'-7"	3'-6"	4'-8"	4'-3"

ROOFING/SIDING: WIND LOADS Panel Description: 5.33" x 1 3/4" V Beam Cooling Tower - NonFirerated 12 oz./sq. ft.	LIMITING CRITERIA: 1.88 to 1 Safety Factor						20 to 1 Deflection Limit Ratio (L/D)								
	Panel Strength = 25000 psi						Flexural Modulus = 600000 psi								
	20 psf		30 psf			40 psf		50 psf		60 psf					
	1 SPAN	2 SPAN	3+ SPAN	1 SPAN	2 SPAN	3+ SPAN	1 SPAN	2 SPAN	3+ SPAN	1 SPAN	2 SPAN	3+ SPAN	1 SPAN	2 SPAN	3+ SPAN
Stress Limit	13'-2"	13'-2"	14'-9"	10'-9"	10'-9"	12'-0"	9'-4"	9'-4"	10'-5"	8'-4"	8'-4"	9'-4"	7'-7"	7'-7"	8'-6"
Deflection Limit	6'-7"	8'-10"	8'-1"	5'-9"	7'-8"	7'-1"	5'-3"	7'-0"	6'-5"	4'-10"	6'-6"	6'-0"	4'-7"	6'-1"	5'-7"

This information is provided as preliminary data for designers. It should be checked and verified and its use determined by a duty licensed engineer or architect. NOTE: Spans will vary with resin formulation, glass content, and thickness. For data on other profiles, formulations, or conditions contact the technical department.

DISCLAIMER: These load span tables do not reflect any span reduction that may be associated with various fastening options.

041 CTN | 16oz.

For CTN Physical Properties Please Refer to Form #3701

TABLES BELOW IN FEET AND INCHES ONLY

ROOFING: POSITIVE LOADS		LIMITING CRITERIA: 2.5 to 1 Safety Factor						45 to 1 Deflection Limit Ratio (L/D)								
Panel Description: 5.33" x 1 3/4" V Beam		Panel Strength = 25000 psi						Flexural Modulus = 600000 psi								
Cooling Tower - NonFierated																
16 oz./sq. ft.		20 psf			30 psf			40 psf			50 psf			60 psf		
		1 SPAN	2 SPAN	3+ SPAN	1 SPAN	2 SPAN	3+ SPAN	1 SPAN	2 SPAN	3+ SPAN	1 SPAN	2 SPAN	3+ SPAN	1 SPAN	2 SPAN	3+ SPAN
Stress Limit		13'-1"	13'-1"	14'-8"	10'-9"	10'-9"	12'-0"	9'-3"	9'-3"	10'-4"	8'-4"	8'-4"	9'-3"	7'-7"	7'-7"	8'-6"
Deflection Limit		5'-6"	7'-5"	6'-10"	4'-10"	6'-5"	5'-11"	4'-5"	5'-10"	5'-5"	4'-1"	5'-5"	5'-0"	3'-10"	5'-1"	4'-9"

ROOFING/SIDING: WIND LOADS		LIMITING CRITERIA: 1.88 to 1 Safety Factor						20 to 1 Deflection Limit Ratio (L/D)								
Panel Description: 5.33" x 1 3/4" V Beam		Panel Strength = 25000 psi						Flexural Modulus = 600000 psi								
Cooling Tower - NonFierated																
16 oz./sq. ft.		20 psf			30 psf			40 psf			50 psf			60 psf		
		1 SPAN	2 SPAN	3+ SPAN	1 SPAN	2 SPAN	3+ SPAN	1 SPAN	2 SPAN	3+ SPAN	1 SPAN	2 SPAN	3+ SPAN	1 SPAN	2 SPAN	3+ SPAN
Stress Limit		15'-2"	15'-2"	16'-11"	12'-4"	12'-4"	13'-10"	10'-8"	10'-8"	12'-0"	9'-7"	9'-7"	10'-8"	8'-9"	8'-9"	9'-9"
Deflection Limit		7'-3"	9'-8"	8'-11"	6'-4"	8'-6"	7'-10"	5'-9"	7'-8"	7'-1"	5'-4"	7'-2"	6'-7"	5'-0"	6'-9"	6'-2"

041 CTA | 12oz.

For CTA Physical Properties Please Refer to Form #3702

TABLES BELOW IN FEET AND INCHES ONLY

ROOFING: POSITIVE LOADS		LIMITING CRITERIA: 2.5 to 1 Safety Factor						45 to 1 Deflection Limit Ratio (L/D)								
Panel Description: 5.33" x 1 3/4" V Beam		Panel Strength = 20000 psi						Flexural Modulus = 450000 psi								
Cooling Tower - Fierated																
12 oz./sq. ft.		20 psf			30 psf			40 psf			50 psf			60 psf		
		1 SPAN	2 SPAN	3+ SPAN	1 SPAN	2 SPAN	3+ SPAN	1 SPAN	2 SPAN	3+ SPAN	1 SPAN	2 SPAN	3+ SPAN	1 SPAN	2 SPAN	3+ SPAN
Stress Limit		10'-3"	10'-3"	11'-6"	8'-5"	8'-5"	9'-5"	7'-3"	7'-3"	8'-2"	6'-6"	6'-6"	7'-3"	5'-11"	5'-11"	6'-8"
Deflection Limit		4'-7"	6'-2"	5'-8"	4'-0"	5'-4"	4'-11"	3'-8"	4'-10"	4'-6"	3'-4"	4'-6"	4'-2"	3'-2"	4'-3"	3'-11"

ROOFING/SIDING: WIND LOADS		LIMITING CRITERIA: 1.88 to 1 Safety Factor						20 to 1 Deflection Limit Ratio (L/D)								
Panel Description: 5.33" x 1 3/4" V Beam		Panel Strength = 20000 psi						Flexural Modulus = 450000 psi								
Cooling Tower - Fierated																
12 oz./sq. ft.		20 psf			30 psf			40 psf			50 psf			60 psf		
		1 SPAN	2 SPAN	3+ SPAN	1 SPAN	2 SPAN	3+ SPAN	1 SPAN	2 SPAN	3+ SPAN	1 SPAN	2 SPAN	3+ SPAN	1 SPAN	2 SPAN	3+ SPAN
Stress Limit		11'-10"	11'-10"	13'-3"	9'-8"	9'-8"	10'-10"	8'-5"	8'-5"	9'-4"	7'-6"	7'-6"	8'-5"	6'-10"	6'-10"	7'-8"
Deflection Limit		6'-0"	8'-0"	7'-5"	5'-3"	7'-0"	6'-6"	4'-9"	6'-4"	5'-10"	4'-5"	5'-11"	5'-5"	4'-2"	5'-7"	5'-2"

041 IFW | 16oz.

For IFW Physical Properties Please Refer to Form #3703

ROOFING: POSITIVE LOADS		LIMITING CRITERIA: 2.5 to 1 Safety Factor						45 to 1 Deflection Limit Ratio (L/D)								
Panel Description: 5.33" x 1 3/4" V Beam		Panel Strength = 30000 psi						Flexural Modulus = 1000000 psi								
IsoTuf High-Strength																
16 oz./sq. ft.		20 psf			30 psf			40 psf			50 psf			60 psf		
		1 SPAN	2 SPAN	3+ SPAN	1 SPAN	2 SPAN	3+ SPAN	1 SPAN	2 SPAN	3+ SPAN	1 SPAN	2 SPAN	3+ SPAN	1 SPAN	2 SPAN	3+ SPAN
Stress Limit		15'-4"	15'-4"	17'-2"	12'-6"	12'-6"	14'-0"	10'-10"	10'-10"	12'-1"	9'-8"	9'-8"	10'-10"	8'-10"	8'-10"	9'-11"
Deflection Limit		6'-10"	9'-2"	8'-5"	6'-0"	8'-0"	7'-5"	5'-5"	7'-3"	6'-8"	5'-0"	6'-9"	6'-3"	4'-9"	6'-4"	5'-10"

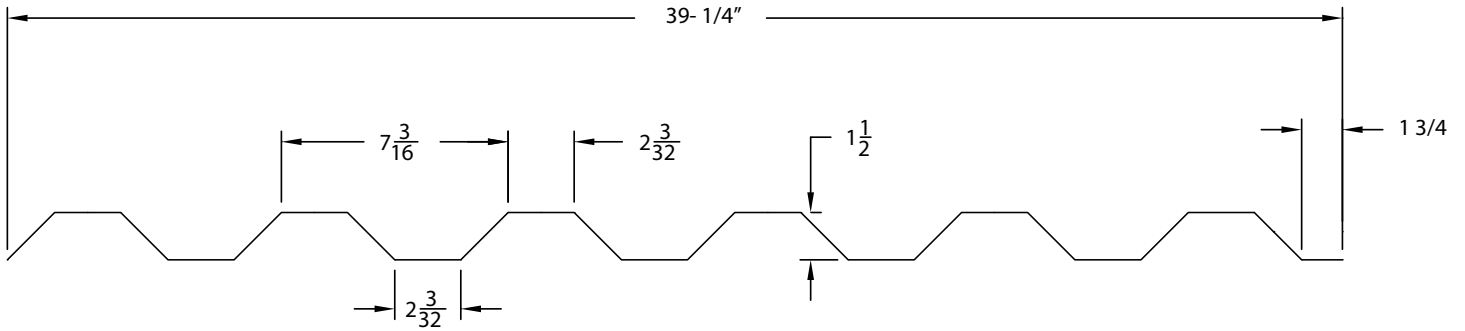
ROOFING/SIDING: WIND LOADS		LIMITING CRITERIA: 1.88 to 1 Safety Factor						20 to 1 Deflection Limit Ratio (L/D)								
Panel Description: 5.33" x 1 3/4" V Beam		Panel Strength = 30000 psi						Flexural Modulus = 1000000 psi								
IsoTuf High-Strength																
16 oz./sq. ft.		20 psf			30 psf			40 psf			50 psf			60 psf		
		1 SPAN	2 SPAN	3+ SPAN	1 SPAN	2 SPAN	3+ SPAN	1 SPAN	2 SPAN	3+ SPAN	1 SPAN	2 SPAN	3+ SPAN	1 SPAN	2 SPAN	3+ SPAN
Stress Limit		17'-8"	17'-8"	19'-9"	14'-5"	14'-5"	16'-2"	12'-6"	12'-6"	14'-0"	11'-2"	11'-2"	12'-6"	10'-2"	10'-2"	11'-5"
Deflection Limit		9'-0"	12'-0"	11'-1"	7'-10"	10'-6"	9'-8"	7'-1"	9'-6"	8'-9"	6'-7"	8'-10"	8'-2"	6'-3"	8'-4"	7'-8"

This information is provided as preliminary data for designers. It should be checked and verified and its use determined by a duty licensed engineer or architect. NOTE: Spans will vary with resin formulation, glass content, and thickness. For data on other profiles, formulations, or conditions contact the technical department.

DISCLAIMER: These load span tables do not reflect any span reduction that may be associated with various fastening options.

PROFILE DRAWING 455

NOTE: Drawing not to scale



455 CTN | 8oz.

For CTN Physical Properties Please Refer to Form #3701

TABLES BELOW IN FEET AND INCHES ONLY

ROOFING: POSITIVE LOADS Panel Description: 7.2 x 1-1/2 Cooling Tower - NonFired 8 oz./sq. ft.	LIMITING CRITERIA: 2.5 to 1 Safety Factor						45 to 1 Deflection Limit Ratio (L/D)								
	Panel Strength = 25000 psi						Flexural Modulus = 600000 psi								
	20 psf			30 psf			40 psf			50 psf			60 psf		
	1 SPAN	2 SPAN	3+ SPAN	1 SPAN	2 SPAN	3+ SPAN	1 SPAN	2 SPAN	3+ SPAN	1 SPAN	2 SPAN	3+ SPAN	1 SPAN	2 SPAN	3+ SPAN
Stress Limit	9'-6"	9'-6"	10'-8"	7'-9"	7'-9"	8'-9"	6'-9"	6'-9"	7'-7"	6'-0"	6'-0"	6'-9"	5'-6"	5'-6"	6'-2"
Deflection Limit	4'-3"	5'-8"	5'-2"	3'-8"	4'-11"	4'-7"	3'-4"	4'-6"	4'-2"	3'-1"	4'-2"	3'-10"	2'-11"	3'-11"	3'-7"

ROOFING/SIDING: WIND LOADS Panel Description: 7.2 x 1-1/2 Cooling Tower - NonFired 8 oz./sq. ft.	LIMITING CRITERIA: 1.88 to 1 Safety Factor						20 to 1 Deflection Limit Ratio (L/D)								
	Panel Strength = 25000 psi						Flexural Modulus = 600000 psi								
	20 psf			30 psf			40 psf			50 psf			60 psf		
	1 SPAN	2 SPAN	3+ SPAN	1 SPAN	2 SPAN	3+ SPAN	1 SPAN	2 SPAN	3+ SPAN	1 SPAN	2 SPAN	3+ SPAN	1 SPAN	2 SPAN	3+ SPAN
Stress Limit	11'-0"	11'-0"	12'-4"	9'-0"	9'-0"	10'-11"	7'-9"	7'-9"	8'-8"	6'-11"	6'-11"	7'-9"	6'-4"	6'-4"	7'-1"
Deflection Limit	5'-6"	7'-5"	6'-10"	4'-10"	6'-6"	6'-0"	4'-5"	5'-11"	5'-5"	4'-1"	5'-5"	5'-0"	3'-10"	5'-2"	4'-9"

455 CTN | 12oz.

For CTN Physical Properties Please Refer to Form #3701

TABLES BELOW IN FEET AND INCHES ONLY

ROOFING: POSITIVE LOADS Panel Description: 7.2 x 1-1/2 Cooling Tower - NonFired 12 oz./sq. ft.	LIMITING CRITERIA: 2.5 to 1 Safety Factor						45 to 1 Deflection Limit Ratio (L/D)								
	Panel Strength = 25000 psi						Flexural Modulus = 600000 psi								
	20 psf			30 psf			40 psf			50 psf			60 psf		
	1 SPAN	2 SPAN	3+ SPAN	1 SPAN	2 SPAN	3+ SPAN	1 SPAN	2 SPAN	3+ SPAN	1 SPAN	2 SPAN	3+ SPAN	1 SPAN	2 SPAN	3+ SPAN
Stress Limit	11'-7"	11'-7"	13'-0"	9'-6"	9'-6"	10'-7"	8'-3"	8'-3"	9'-2"	7'-4"	7'-4"	8'-3"	6'-8"	6'-8"	7'-6"
Deflection Limit	4'-10"	6'-6"	6'-0"	4'-3"	5'-8"	5'-2"	3'-10"	5'-2"	4'-9"	3'-7"	4'-9"	4'-5"	3'-4"	4'-6"	4'-2"

ROOFING/SIDING: WIND LOADS Panel Description: 7.2 x 1-1/2 Cooling Tower - NonFired 12 oz./sq. ft.	LIMITING CRITERIA: 1.88 to 1 Safety Factor						20 to 1 Deflection Limit Ratio (L/D)								
	Panel Strength = 25000 psi						Flexural Modulus = 600000 psi								
	20 psf			30 psf			40 psf			50 psf			60 psf		
	1 SPAN	2 SPAN	3+ SPAN	1 SPAN	2 SPAN	3+ SPAN	1 SPAN	2 SPAN	3+ SPAN	1 SPAN	2 SPAN	3+ SPAN	1 SPAN	2 SPAN	3+ SPAN
Stress Limit	13'-5"	13'-5"	15'-0"	10'-11"	10'-11"	12'-3"	9'-6"	9'-6"	10'-7"	8'-6"	8'-6"	9'-6"	7'-9"	7'-9"	8'-8"
Deflection Limit	6'-4"	8'-6"	7'-10"	5'-6"	7'-5"	6'-10"	5'-0"	6'-9"	6'-2"	4'-8"	6'-3"	5'-9"	4'-5"	5'-11"	5'-5"

This information is provided as preliminary data for designers. It should be checked and verified and its use determined by a duty licensed engineer or architect. NOTE: Spans will vary with resin formulation, glass content, and thickness. For data on other profiles, formulations, or conditions contact the technical department.

DISCLAIMER: These load span tables do not reflect any span reduction that may be associated with various fastening options.

455 CTN | 16oz.

For CTN Physical Properties Please Refer to Form #3701

TABLES BELOW IN FEET AND INCHES ONLY

ROOFING: POSITIVE LOADS Panel Description: 7.2 x 1-1/2 Cooling Tower - NonFirerated 16 oz./sq. ft.	LIMITING CRITERIA: 2.5 to 1 Safety Factor Panel Strength = 25000 psi						45 to 1 Deflection Limit Ratio (L/D) Flexural Modulus = 600000 psi								
	20 psf			30 psf			40 psf			50 psf			60 psf		
	1 SPAN	2 SPAN	3+ SPAN	1 SPAN	2 SPAN	3+ SPAN	1 SPAN	2 SPAN	3+ SPAN	1 SPAN	2 SPAN	3+ SPAN	1 SPAN	2 SPAN	3+ SPAN
Stress Limit	13'-4"	13'-4"	14'-11"	10'-11"	10'-11"	12'-2"	9'-5"	9'-5"	10'-6"	8'-5"	8'-5"	9'-5"	7'-8"	7'-8"	8'-7"
Deflection Limit	5'-4"	7'-1"	6'-7"	4'-8"	6'-3"	5'-9"	4'-3"	5'-8"	5'-2"	3'-11"	5'-3"	4'-10"	3'-8"	4'-11"	4'-7"

ROOFING/SIDING: WIND LOADS Panel Description: 7.2 x 1-1/2 Cooling Tower - NonFirerated 16 oz./sq. ft.	LIMITING CRITERIA: 1.88 to 1 Safety Factor Panel Strength = 25000 psi						20 to 1 Deflection Limit Ratio (L/D) Flexural Modulus = 600000 psi								
	20 psf			30 psf			40 psf			50 psf			60 psf		
	1 SPAN	2 SPAN	3+ SPAN	1 SPAN	2 SPAN	3+ SPAN	1 SPAN	2 SPAN	3+ SPAN	1 SPAN	2 SPAN	3+ SPAN	1 SPAN	2 SPAN	3+ SPAN
Stress Limit	15'-4"	15'-4"	17'-2"	12'-6"	12'-6"	14'-0"	10'-10"	10'-10"	12'-2"	9'-9"	9'-9"	10'-10"	8'-10"	8'-10"	9'-11"
Deflection Limit	7'-0"	9'-4"	8'-7"	6'-1"	8'-2"	7'-6"	5'-6"	7'-5"	6'-10"	5'-2"	6'-10"	6'-4"	4'-10"	6'-6"	6'-0"

455 CTA | 12oz.

For CTA Physical Properties Please Refer to Form #3702

TABLES BELOW IN FEET AND INCHES ONLY

ROOFING: POSITIVE LOADS Panel Description: 7.2 x 1-1/2 Cooling Tower - Firerated 12 oz./sq. ft.	LIMITING CRITERIA: 2.5 to 1 Safety Factor Panel Strength = 20000 psi						45 to 1 Deflection Limit Ratio (L/D) Flexural Modulus = 450000 psi								
	20 psf			30 psf			40 psf			50 psf			60 psf		
	1 SPAN	2 SPAN	3+ SPAN	1 SPAN	2 SPAN	3+ SPAN	1 SPAN	2 SPAN	3+ SPAN	1 SPAN	2 SPAN	3+ SPAN	1 SPAN	2 SPAN	3+ SPAN
Stress Limit	10'-5"	10'-5"	11'-8"	8'-6"	8'-6"	9'-6"	7'-5"	7'-5"	8'-3"	6'-7"	6'-7"	7'-5"	6'-0"	6'-0"	6'-9"
Deflection Limit	4'-5"	5'-11"	5'-5"	3'-10"	5'-2"	4'-9"	3'-6"	4'-8"	4'-4"	3'-3"	4'-4"	4'-0"	3'-1"	4'-1"	3'-9"

ROOFING/SIDING: WIND LOADS Panel Description: 7.2 x 1-1/2 Cooling Tower - Firerated 12 oz./sq. ft.	LIMITING CRITERIA: 1.88 to 1 Safety Factor Panel Strength = 20000 psi						20 to 1 Deflection Limit Ratio (L/D) Flexural Modulus = 450000 psi								
	20 psf			30 psf			40 psf			50 psf			60 psf		
	1 SPAN	2 SPAN	3+ SPAN	1 SPAN	2 SPAN	3+ SPAN	1 SPAN	2 SPAN	3+ SPAN	1 SPAN	2 SPAN	3+ SPAN	1 SPAN	2 SPAN	3+ SPAN
Stress Limit	12'-1"	12'-1"	13'-6"	9'-10"	9'-10"	11'-0"	8'-6"	8'-6"	9'-6"	7'-7"	7'-7"	8'-6"	6'-11"	6'-11"	7'-9"
Deflection Limit	5'-9"	7'-9"	7'-2"	5'-0"	6'-9"	6'-3"	4'-7"	6'-2"	5'-8"	4'-3"	5'-8"	5'-3"	4'-0"	5'-4"	4'-11"

455 IFW | 16oz.

For IFW Physical Properties Please Refer to Form #3703

TABLES BELOW IN FEET AND INCHES ONLY

ROOFING: POSITIVE LOADS Panel Description: 7.2 x 1-1/2 IsoTuf High-Strength 16 oz./sq. ft.	LIMITING CRITERIA: 2.5 to 1 Safety Factor Panel Strength = 30000 psi						45 to 1 Deflection Limit Ratio (L/D) Flexural Modulus = 1000000 psi								
	20 psf			30 psf			40 psf			50 psf			60 psf		
	1 SPAN	2 SPAN	3+ SPAN	1 SPAN	2 SPAN	3+ SPAN	1 SPAN	2 SPAN	3+ SPAN	1 SPAN	2 SPAN	3+ SPAN	1 SPAN	2 SPAN	3+ SPAN
Stress Limit	15'-7"	15'-7"	17'-5"	12'-8"	12'-8"	14'-2"	11'-0"	11'-0"	12'-4"	9'-10"	9'-10"	11'-0"	9'-0"	9'-0"	10'-0"
Deflection Limit	6'-7"	8'-10"	8'-2"	5'-9"	7'-9"	7'-1"	5'-3"	7'-0"	6'-5"	4'-10"	6'-6"	6'-0"	4'-7"	6'-1"	5'-8"

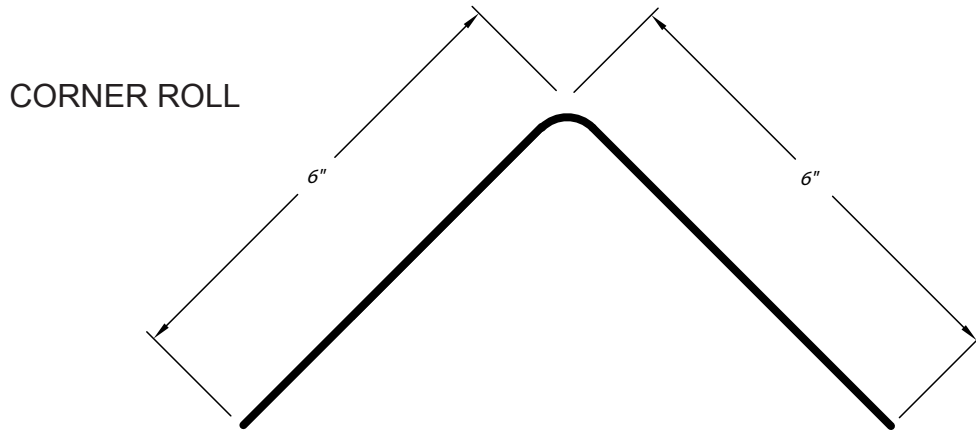
ROOFING/SIDING: WIND LOADS Panel Description: 7.2 x 1-1/2 IsoTuf High-Strength 16 oz./sq. ft.	LIMITING CRITERIA: 1.88 to 1 Safety Factor Panel Strength = 30000 psi						20 to 1 Deflection Limit Ratio (L/D) Flexural Modulus = 1000000 psi								
	20 psf			30 psf			40 psf			50 psf			60 psf		
	1 SPAN	2 SPAN	3+ SPAN	1 SPAN	2 SPAN	3+ SPAN	1 SPAN	2 SPAN	3+ SPAN	1 SPAN	2 SPAN	3+ SPAN	1 SPAN	2 SPAN	3+ SPAN
Stress Limit	17'-11"	17'-11"	20'-1"	14'-8"	14'-8"	16'-4"	12'-8"	12'-8"	14'-2"	11'-4"	11'-4"	12'-8"	10'-4"	10'-4"	11'-7"
Deflection Limit	8'-8"	11'-7"	10'-8"	7'-6"	10'-1"	9'-4"	6'-10"	9'-2"	8'-6"	6'-4"	8'-6"	7'-10"	6'-0"	8'-0"	7'-5"

This information is provided as preliminary data for designers. It should be checked and verified and its use determined by a duly licensed engineer or architect. NOTE: Spans will vary with resin formulation, glass content, and thickness. For data on other profiles, formulations, or conditions contact the technical department.

DISCLAIMER: These load span tables do not reflect any span reduction that may be associated with various fastening options.

PROFILE DRAWING 152

NOTE: Drawing not to scale



Positive and Wind Load data is not applicable

This information is provided as preliminary data for designers. It should be checked and verified and its use determined by a duly licensed engineer or architect. NOTE: Spans will vary with resin formulation, glass content, and thickness. For data on other profiles, formulations, or conditions contact the technical department.

DISCLAIMER: These load span tables do not reflect any span reduction that may be associated with various fastening options.

FORM 3700 (5286) | 8/2009